

Joint play detector for passenger cars and light commercial vehicles

Hydraulically actuated equipment for examination of vehicle suspension and steering elements up to 2,6 t axle load. Due to 6 different directions of movements the joint play detector is suitable for diagnostic purposes and for periodical technical inspections. The low mechanics allows installation on inspection pit above floor or under floor, and lifts.



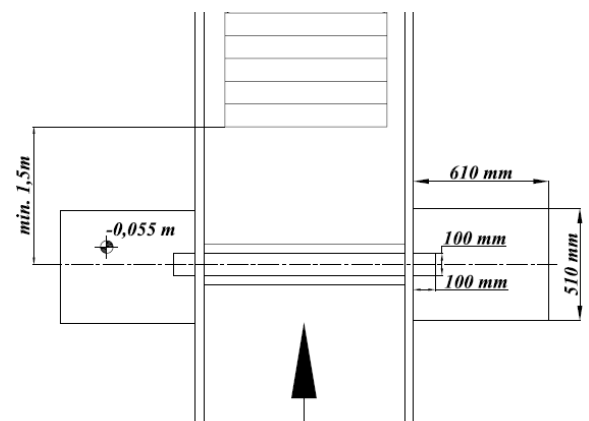
- Testing M1, N1 vehicle categories
- Can be installed on inspection pit and lifts
- Longitudinal, lateral and turning movements
- Different test plate surfaces
- Examinations by one person with special brake pedal depressor
- Downward hydraulic connections (**HDA-2.6P**) or sideward hydraulic connections (**HDA-2.6L**)
- The covering of the moving plate edges provide additional safety for the user
- When the equipment is turned off, the test plates are fixed, too

Requirements for installation

- Preparation of concrete bed / ground work with edge protection frame
- Preparation of tracks for electronic cables and hydraulic tubes
- Preparation of electrical installation and protective tubing for electronic cables and hydraulic hoses
- Filling with hydraulic oil



Installed HDA-2.6P



Installation scheme
 (no replacement for the installation drawing)

Standard equipment

- Left and right mechanical unit
- Hydraulic power pack with electronic power box
- Remote control lamp
- Brake pedal depressor

Accessories

- For lift installation permission from the lift manufacturer is required. Standard lift accessories (roll-down protection device, special bar to connect the two sides of the lift) shall be given
- Hydraulic hoses with M12 x 1,5 mm connections (standard length is 4 x 1800 mm and 4 x 4000 mm for HDA-2.6P, 4 x 2400 mm and 4 x 4700 mm for HDA-2.6L)

Optional accessories

- Adverse longitudinal movement with 2 additional movement directions
- Access ramps for above floor or lift installations

Technical data (HDA-2.6P and HDA-2.6L)

Maximum axle load: 2.6 t
 Minimum track width: 1000 mm
 Maximum track width: 2000 mm

Test plate dimensions: 500 x 270 mm
 Test plate surfaces: epoxi corundum / ribbed steel
 Maximum force per test plate: 8000 N
 Maximum torque: 1300 Nm
 Movement speed: 40 mm/s
 Turning speed: 10 %/s

Movements

Lateral (right side): 80 mm
 Longitudinal (both sides parallel): 50 mm
 Turning (left side): 12°

Test plate with turning movement shall be located on the steering wheel's side.

Installed dimensions (W x L x D):

on inspection pit: 2220 x 520 x 54 mm
 on lift (2 sides): 500 x 500 x 54 mm

Corrosion protection: galvanised

Hydraulic oil quantity: 5,8 litres

Hydraulic oil quality: Hydrokomol U32

Replaceable: ISO-L-HM 32 or DIN-HLP 32

For locations where the temperature is constantly under 0°C the quality of U10 hydraulic oil is recommended to avoid oil numbing.

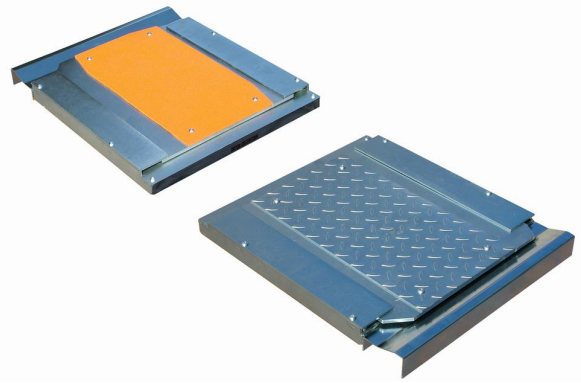
Motor power: 1.1 kW

Supply: 3 x 400 V

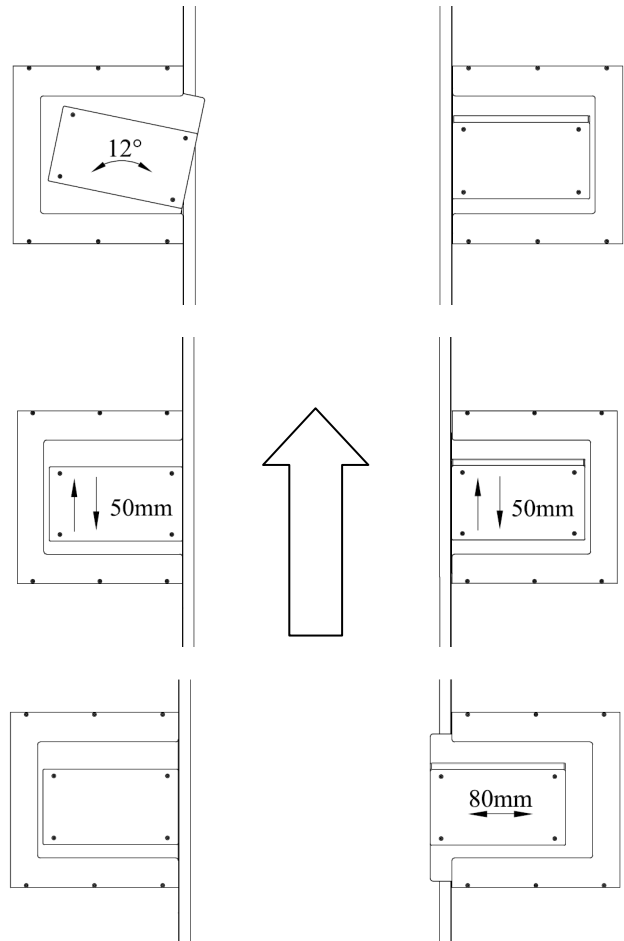
Fuse: 3 x 10 A

Made in Hungary

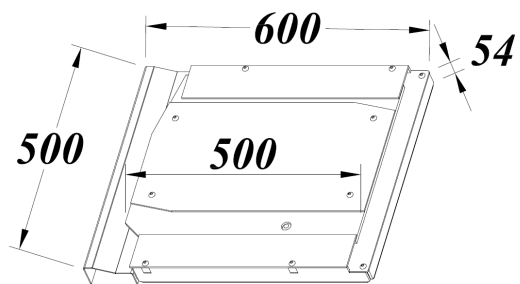
Your Partner:



HDA-2.6P mechanical unit



HDA-2.6 directions of movements



Dimensions of HDA-2.6P mechanical unit

Due to constant product improvement Energotest reserves the right to make changes without prior notice. Images may contain optional extras.